

Paper Reference(s) 1PS0/01
Pearson Edexcel Level 1/Level 2 GCSE (9–1)

Psychology
PAPER 1

Wednesday 15 May 2024 – Afternoon

Time: 1 hour 45 minutes

Diagram Booklet

**THIS DIAGRAM BOOKLET MUST BE
RETURNED WITH THE QUESTION PAPER
AT THE END OF THE EXAMINATION.**

In the boxes below, write your name, centre number and candidate number.

Surname					
Other names					
Centre Number					
Candidate Number					

CONTENTS

Page

3	Question 5
4	Question 9
5	Question 11
6	Question 14
7	Question 17
8	Question 19 – Figure 3
9	Question 19 – Table 4
10–11	Question 23 – Table 5

TABLE 1

Pupil age	Number of pupils who said the triangular building would be at the front and the rectangular building would be at the back	Number of pupils who said the rectangular building would be at the front and the triangular building would be at the back
6 years old	26	4
8 years old	13	17
10 years old	3	27

Question 9

FIGURE 1:

**Acid
Unripe
Lemon
Bitter
Sharp
Tart**

TABLE 2

Condition	Average number of pictures correctly recognised (out of 3)
No painkiller	2.9
Painkiller	1.1

TABLE 3

Group	Group A	Group B	Group C
Symptom severity (1–10) before the investigation	6·8	9·8	7·6
Symptom severity (1–10) at the end of the investigation	6·5	6·5	7·3

FIGURE 2

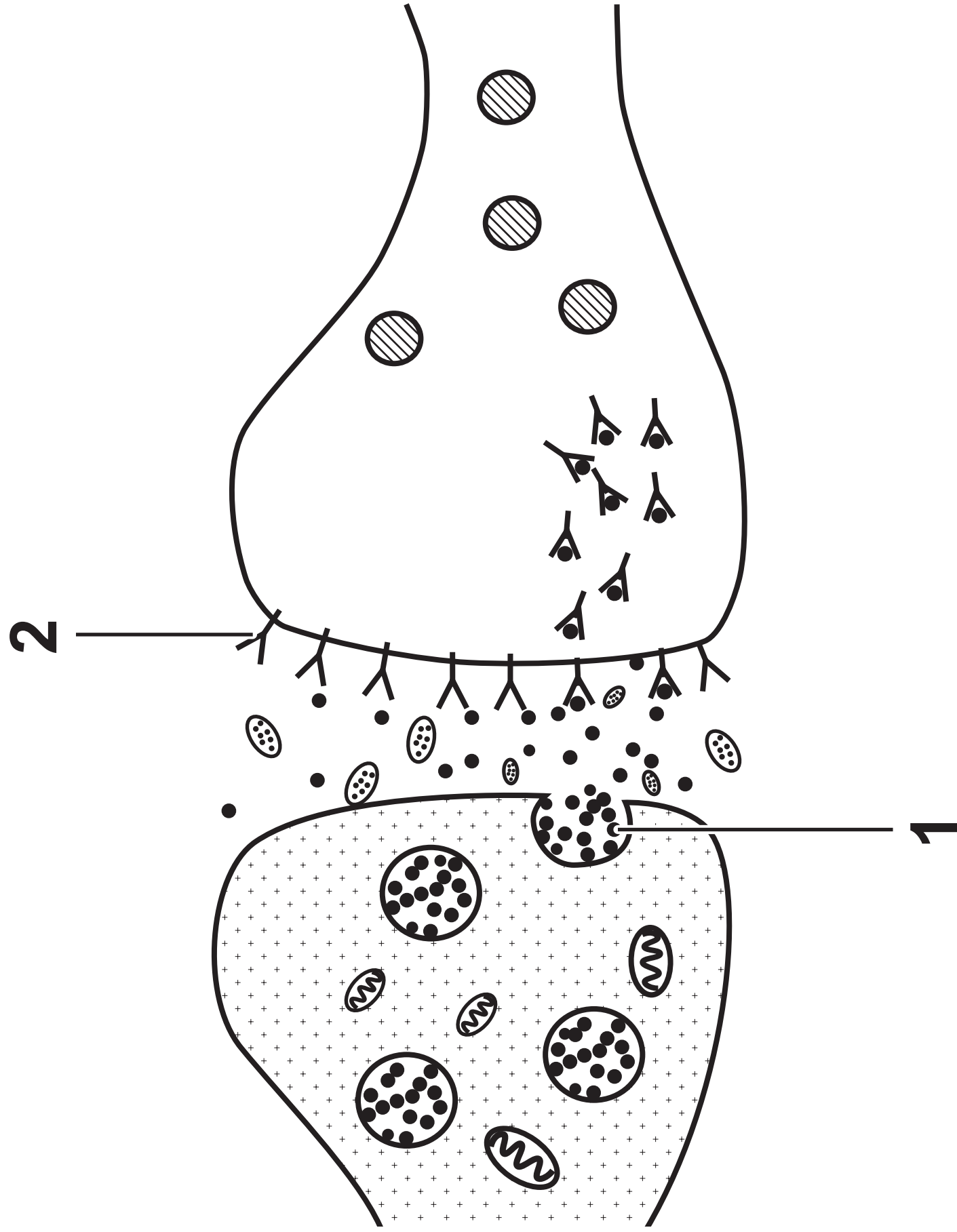


FIGURE 3


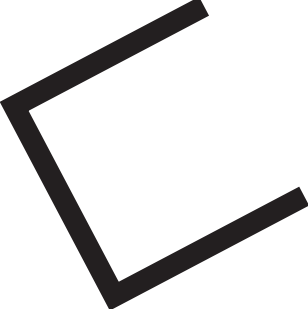
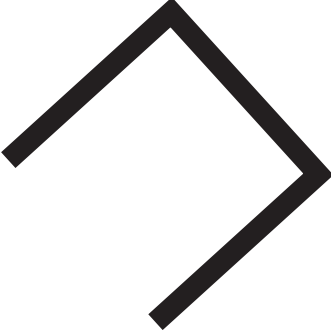
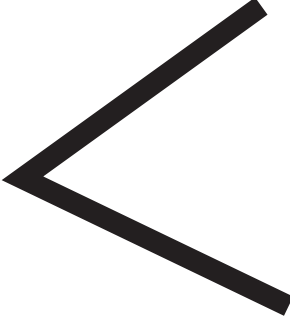
Word category task example:	Shape category task example
teacher	
doctor	
lamp	
poet	

TABLE 4

	Task 1 – percentage of correct responses	Task 2 – percentage of correct responses
Participant with damage to the left hemisphere of the brain	4%	8%
Participant with damage to the right hemisphere of the brain	92%	6%

TABLE 5

Variation A: Authority figure presence		
In person		Loudspeaker
% OBEDIENCE	30	10

(continued on the next page)

TABLE 5

% OBEDIENCE	Variation B: Clothes worn by authority figure		Variation C: Gender of authority figure	
	Uniform	Casual	Male	Female
	45	15	30	30

Source Information

Question 17

**Source adapted from: © Medical Labeled /
Alamy Stock Vector**